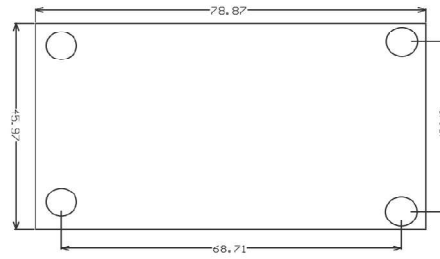
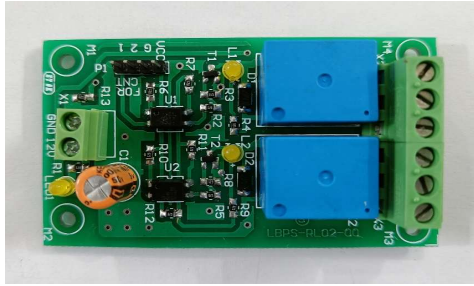




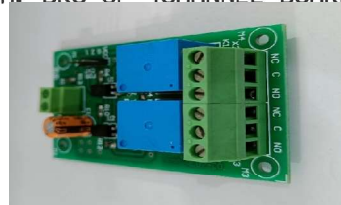
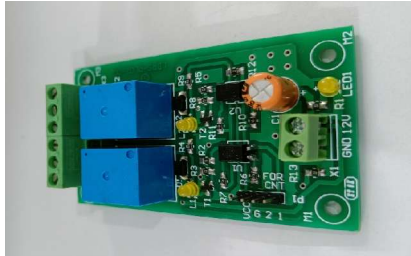
## LIGHT BROTHER POWER SOLUTION

Plot no-116, Near Tata Pasco Showroom, Narsinghpur,  
Gurgaon – 122004 (Haryana) India  
Email: lbpsindia01@gmail.com

### DETAIL OF 2 CHANNEL 12V RELAY BOARD



MACH. DRG OF 4CHANNEL BOARD



- \* 12V 2 Channels Relay, Module High and Low, Triggering Optocoupler, Isolation Relay Module, for boards compatible with NI Arduino Pic Avr Mcu Dsp Arm PLC Industrial science Project- (Pack OF 1)
- \* This 2 Channel 12V relay Relay Module (Low level Trigger) can control by interface device. This is an 2 Channel relay module, each relay channel has 3 separate terminals, NO (Normal Open), COM (Common), NC (Normal Closed).
- \* A Relay is similar to a mechanic relay where it can be controlled through a digital signal. Relay generates no noise and transiate current during switching.
- \* When the input logic voltage is applied to the coil, the NC will disconnect from the COM breaking the conductivity between the two. At the same time, the NO will connect with the COM allowing conductivity between them. Depending on your wiring this will turn on or off the connected load.
- \* 2 Channel 12V Relay Module (Low level Trigger) Can be directly controlled by Arduino and other microcontrollers or interface device (NI Device) It is Sixteen channels relay interface boardable to control various appliances and equipment with large current (10Amp).

#### Input parts :

- 1. 12V:** Connect power positive
- 2. GND:** Connect power negative

#### Interface Connector detail:

- 1. CH1:** Relay module signal trigger point (Effective low-level trigger)
- 2. CH2:** Relay module signal trigger point (Effective low-level trigger)
- 3. GND:** Relay module isolated GND.
- 4. VCC:** Relay module isolated VCC 5V(Optional).

#### Note:

1. Power must be 12DC voltage and need to be consistent with the voltage relay.
2. This Relay module is a Low-Level Trigger Module. Please note it before purchase.
3. Product Image May vary in terms of Brand Name on relay according to the availability of Supplier

#### Features :

1. 2channel 10 AMP Relay board
2. Control 2 loads of up to 10 amps each at 120V or 240V AC.
3. Good for lighting, holiday displays etc.
4. Has been assembled, and the electrical test passed.
5. Led indicator for each relay.
6. Use it to control various appliances and other equipment with a large current.
7. It can be controlled directly by Microcontroller or NI Card

#### Package Includes :

1 x 12V 2 Channel Relay Module.

#### Specifications :-

Trigger type	Low Level Trigger
Part Number	LBPS-RL02-00
Working Channel	2
Trigger Current (mA)	10mA
Trigger Voltage (VDC)	5
Isolation	Photoopto
Length (mm)	79
Width (mm)	46
Height (mm)	22
Weight (gm)	90Gram

\* Product Images are shown for illustrative purposes only and may differ from actual product.